



# PRATHYUSHA ENGINEERING COLLEGE

## CRITERIA-7

### 7.1 Institutional Values and Social Responsibilities

#### 7.1.2 The Institution has facilities for alternate sources of energy and energy conservation measures

**DETAILS OF SOLAR ENERGY**

**2021 -22**



## 7.1 Institutional Values and Social Responsibilities

### 7.1.2 Facilities for alternate sources of energy and energy conservation measures.

#### 7.1.2 The Institution has facilities for alternate sources of energy and energy conservation measures

##### SOLAR ENERGY

Solar energy is radiant light and heat from the Sun that is harnessed using a range of ever-evolving technologies like such as solar heating, photovoltaics, solar thermal energy, etc.

PEC installed solar energy Plant on 07. 09.2018 by KCP Solar Industry with execution of 125 kW KCP Solar Grid Tied Power Plant.

Total power requirement in units : 340146 Units

#### Power requirement met by renewable energy sources

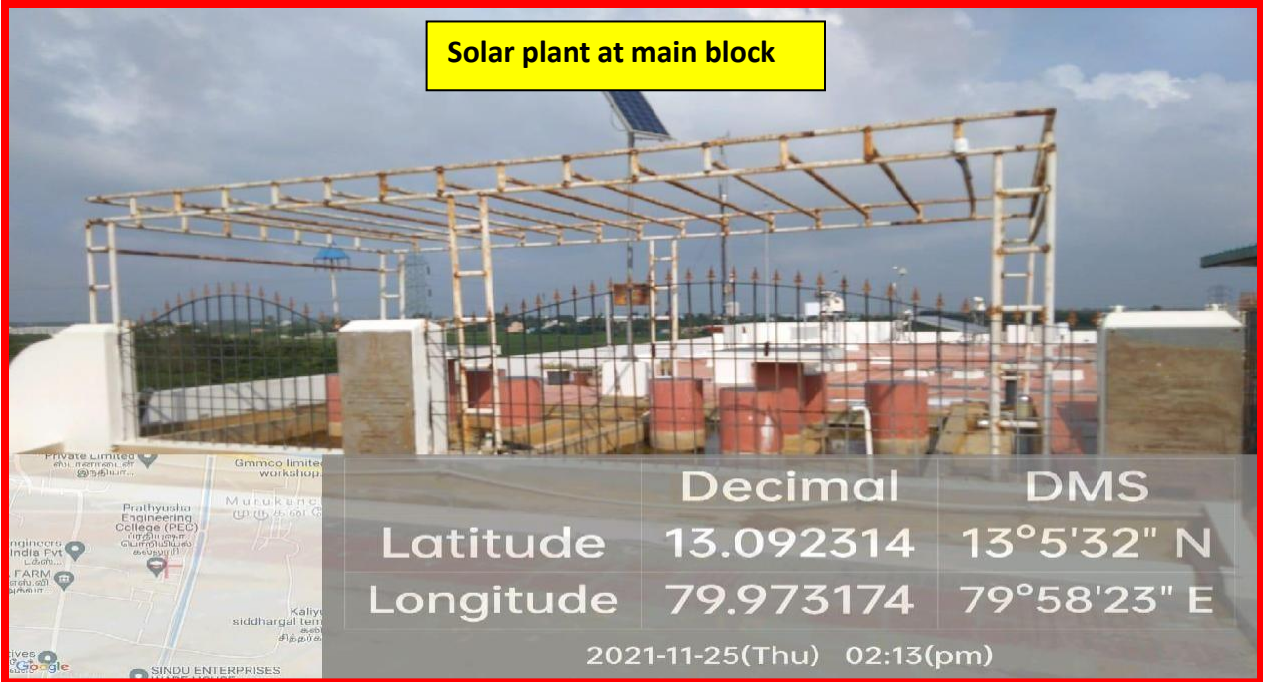
during the period 2021-22 : 80782 Units.

Year	Power requirement met by renewable energy sources in units	Total power requirement in units	Renewable energy source	Renewable energy generated and used in %	Energy supplied to the grid
2021 -22	80782	340146	Solar Power	24%	Nil

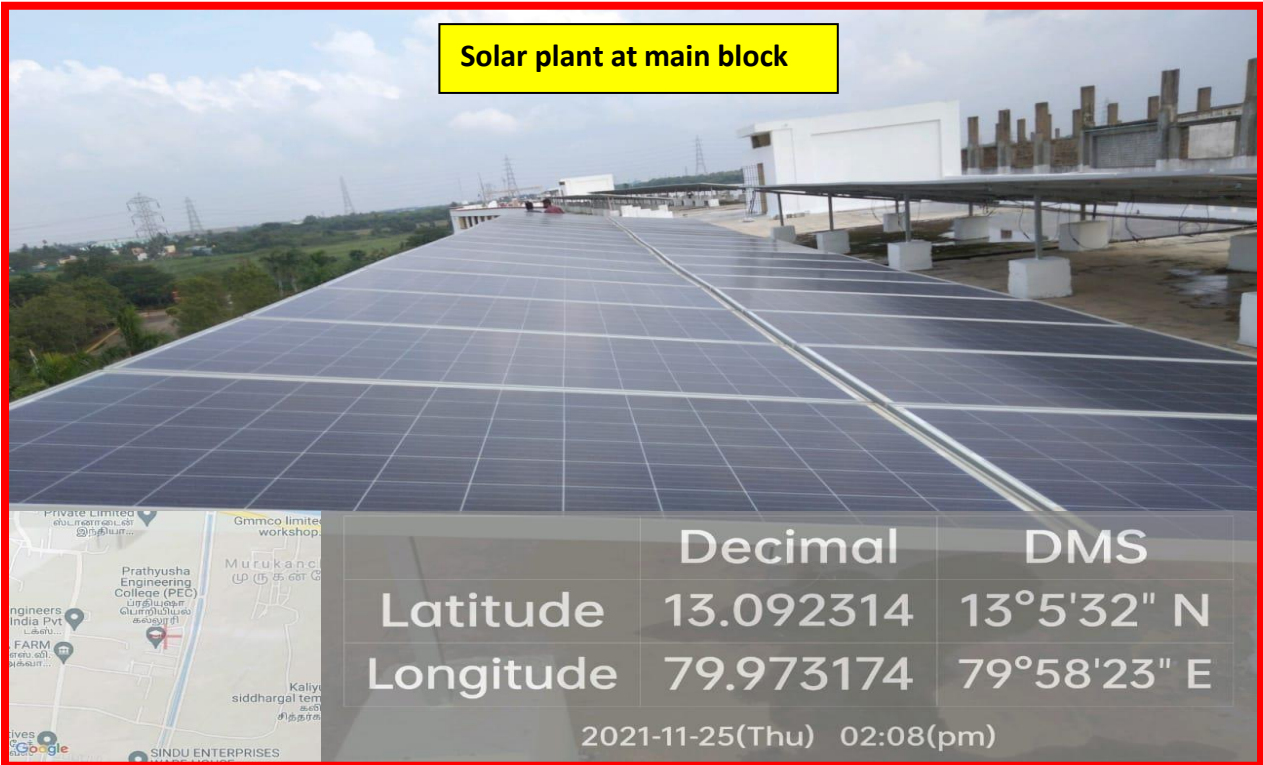
**Percentage of annual power requirement of the Institution met by the renewable energy sources for six years**

<b>Year</b>	<b>Power requirement met by renewable energy sources</b>	<b>Total power requirement in units</b>	<b>Renewable energy source</b>	<b>Renewable energy generated and used in units</b>	<b>Energy supplied to the grid</b>
2021 - 22	80782	340146	Solar	80782	Nil
2020 - 21	83252	269228	Solar	83252	Nil
2019 - 20	165242	547613	Solar	165242	Nil
2018 -19	48297	544788	Solar	48297	Nil
2017 -18	Nil	496985	Nil	Nil	Nil
2016 -17	Nil	485692	Nil	Nil	Nil

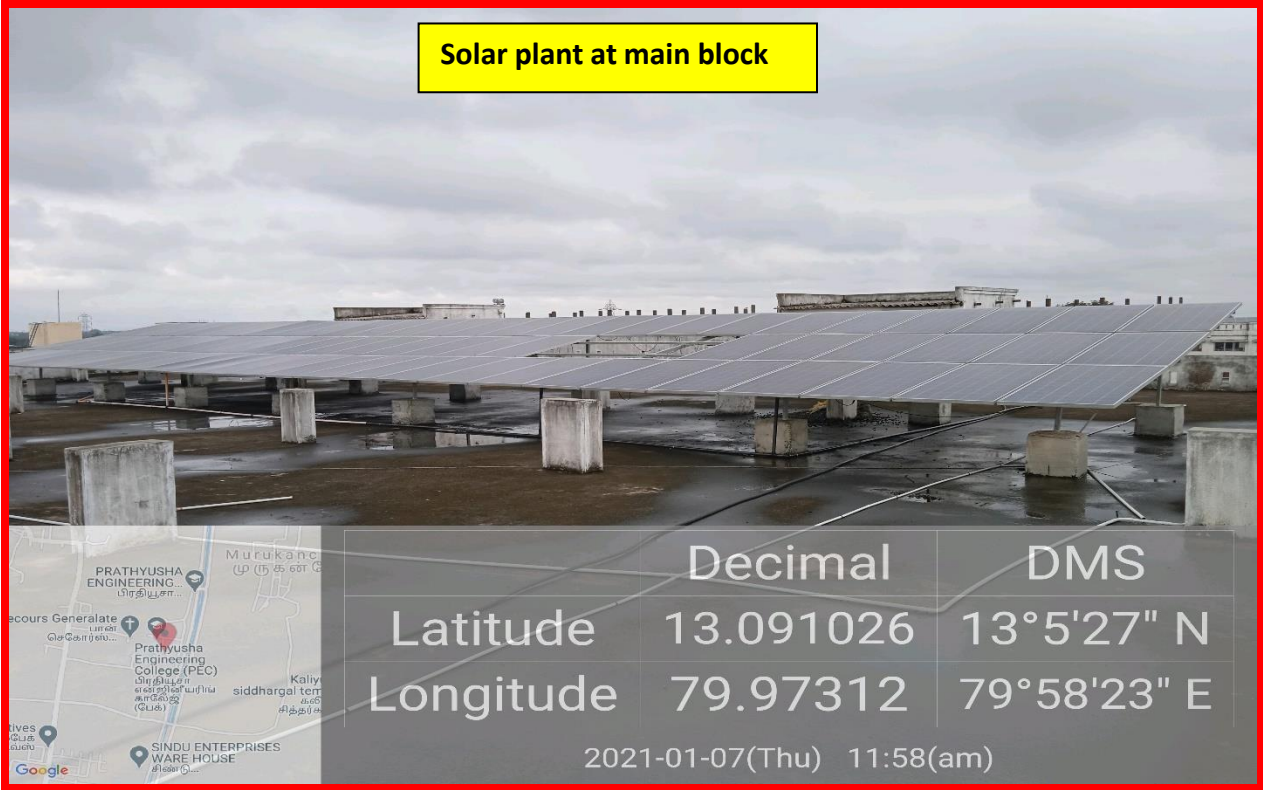
Solar plant at main block



Solar plant at main block



Solar plant at main block



	Decimal	DMS
Latitude	13.091026	13°5'27" N
Longitude	79.97312	79°58'23" E

2021-01-07(Thu) 11:58(am)