

PRATHYUSHA ENGINEERING COLLEGE

ARANVOYALKUPPAM – 602 025

Attainment of Course Outcomes

Describe the assessment processes used together the data upon which the evaluation of Course Outcome is based

A. List of assessment processes

The Department COs are defined through a consultative process taking the views of all the stakeholders, vision and mission of the department into account.

The steps involved in the process are as follows:

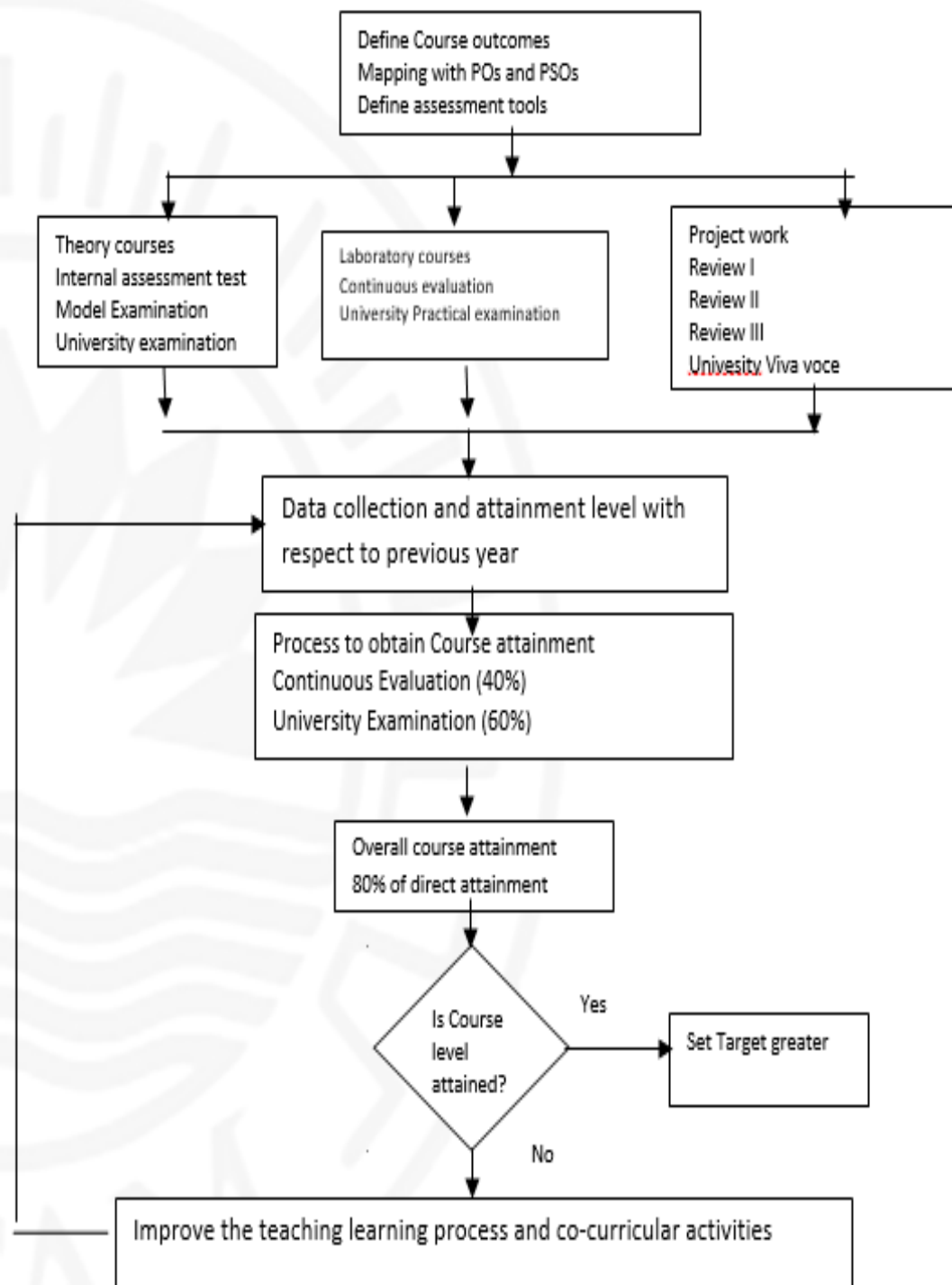
Step 1: Vision and Mission of the department, Graduate attributes prescribed by NBA.

Step 2: Views from all the stakeholders' viz., industry, management, parents, professional bodies & students and department review meetings.

Step 3: The accepted views are analyzed and reviewed to check the consistency with the vision and mission of the department.

Step 4: The definition of the COs evolved to be approved by the committee comprising of the Head of the Department, Professors and senior faculty members of the department.

Step 5: Redefinition of COs using the results obtained from the exit survey.



CO ATTAINMENT

